

INFLATABLE LAWN HELMET

4 FEET TALL INFLATABLE LAWN HELMET EQUIPPED WITH
LED LIGHTS TO GLOW AT NIGHT

WARNING: READ AND UNDERSTAND INSTRUCTION BEFORE USE

CONTAINS:

3 METAL STAKES, 3 PLASTIC STAKES WITH ROPES
1 INFLATABLE HELMET
1 AIR INFLATOR & POWER SUPPLY

INFORMATION:

100-240V universal AC/DC adaptor 2 pin plug
2 Meter long cord
6 LED light 0.4W each
DC12V 800MA brushless air inflator

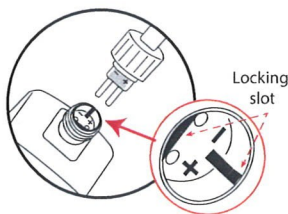
WARNING:

ELECTRICALLY OPERATED PRODUCT.

THIS IS NOT A TOY. Set up by adults only and adult supervision required. As with all electric products, precaution should be observed during handling and use to prevent electric shock. Never allow children to play with or jump on product.

Adults: Periodically examine this product for damage to the cord, housing or other parts that may result in the risk of fire, electric shock or injury. If the product is damaged, do not use it.

DANGER : To prevent electric shock, do not immerse in water; wipe clean with damp cloth. Immersing this product can result in an electric shock.



The positive polarity of cable (+) should always be connected to the positive polarity of DC adaptor (+) and it should match the locking slot of the adaptor.

Check that all connection is correct plugged in and screws the locking nut of cable.

Warning: Before starting the cable installation, be sure to unplug the adaptor. If the power is left on during installation, fire, electrical shock may occur.

SAFETY INSTRUCTIONS:

1. This is an electrical product - not a toy! To avoid risk of fire, burns, personal injury, and electric shock, it should not be played with or placed where small children can reach it.
2. This product is not intended for permanent installation.
3. Do not mount or place near gas or electric heaters, fireplaces, candles, or other similar sources of heat.
4. Do not use this product for other than its intended purpose.
5. Do not hang ornaments or other objects from cord, wire, or light string.
6. Do not cover the product with a cloth, paper, or any material not part of the product when in use.
7. Do not place the product on carpeting, furniture, or any other fabric when in use.
8. When not in use, store in a cool, dry location protected from sunlight.
9. Do not block any ventilation openings. It is recommended to install in a location that does not block ventilation.
10. The power unit is intended to be correctly oriented in a vertical or floor mount position.

CAUTION:

Do not attempt to inflate during unusually strong wind. If it becomes too windy for safe operation, simply allow your inflatable to deflate, secure it, and wait for better condition.

DEFLATING

1. Unplug adapter.
2. Unzip zipper for the air to be released faster.
3. Compress neatly so all the air is out, then store back into box.
4. Do not unplug by pulling on cord.

LIGHTS

The LED lights within your INFLATABLE LAWN HELMET are designed to help your Helmet have a soothing glow at night. Lighter colored Helmets give off more light than darker colored Helmets. These LED lights are not replaceable.